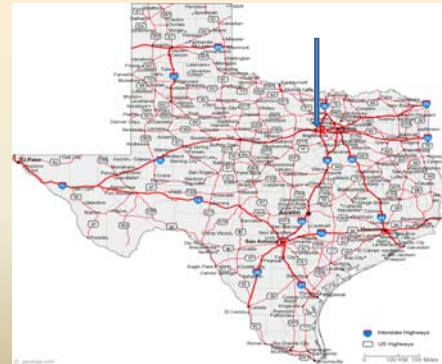


Becoming a CSC in a Nonacademic Environment: Challenges and Opportunities



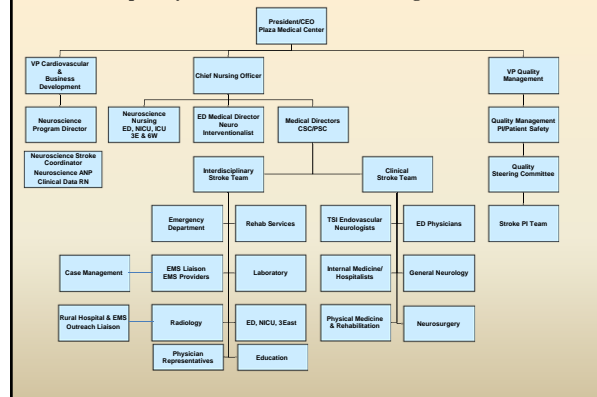
We are Here



Let the Journey Begin!

- Gain full support of the administrative team and physician leaders
- Complete Gap Analysis
- Research and collaborate with other CSCs for best practices
- Collaboration and support of the EMS partners
- Regional and state participation
- Data collection process
- Create a comprehensive stroke education system
- Be able to navigate through the system
- Delegate, do not try this on your own!

Interdisciplinary Professional Stroke Team Organizational Chart



“Mash the Gas or Step on the Brakes”

Determine what can be realistically provided for each of your key aspects of patient care:

- EMS collaboration and commitment
- Acute stroke intervention and management
- Prevention of complications
- Secondary stroke prevention
- Early rehabilitation
- Clinical research

Gap Analysis

Line #	Responsible Staff	Standard Number/Elements	Met	Not Met	IC = Critical Standard and ongoing process review	P = Policy / Protocol M = Measurement	Division/Dept. Responsible	Written Standard	Comments/Notes
1	Stroke Team	1000	Met				Stroke Team	Stroke Team Charter	
2	Stroke Team	1001	Met				Stroke Team	Stroke Team Charter	
3	Stroke Team	1002	Met				Stroke Team	Stroke Team Charter	
4	Stroke Team	1003	Met				Stroke Team	Stroke Team Charter	
5	Stroke Team	1004	Met				Stroke Team	Stroke Team Charter	
6	Stroke Team	1005	Met				Stroke Team	Stroke Team Charter	
7	Stroke Team	1006	Met				Stroke Team	Stroke Team Charter	
8	Stroke Team	1007	Met				Stroke Team	Stroke Team Charter	
9	Stroke Team	1008	Met				Stroke Team	Stroke Team Charter	
10	Stroke Team	1009	Met				Stroke Team	Stroke Team Charter	
11	Stroke Team	1010	Met				Stroke Team	Stroke Team Charter	
12	Stroke Team	1011	Met				Stroke Team	Stroke Team Charter	
13	Stroke Team	1012	Met				Stroke Team	Stroke Team Charter	
14	Stroke Team	1013	Met				Stroke Team	Stroke Team Charter	
15	Stroke Team	1014	Met				Stroke Team	Stroke Team Charter	
16	Stroke Team	1015	Met				Stroke Team	Stroke Team Charter	
17	Stroke Team	1016	Met				Stroke Team	Stroke Team Charter	
18	Stroke Team	1017	Met				Stroke Team	Stroke Team Charter	
19	Stroke Team	1018	Met				Stroke Team	Stroke Team Charter	
20	Stroke Team	1019	Met				Stroke Team	Stroke Team Charter	
21	Stroke Team	1020	Met				Stroke Team	Stroke Team Charter	
22	Stroke Team	1021	Met				Stroke Team	Stroke Team Charter	
23	Stroke Team	1022	Met				Stroke Team	Stroke Team Charter	
24	Stroke Team	1023	Met				Stroke Team	Stroke Team Charter	
25	Stroke Team	1024	Met				Stroke Team	Stroke Team Charter	
26	Stroke Team	1025	Met				Stroke Team	Stroke Team Charter	
27	Stroke Team	1026	Met				Stroke Team	Stroke Team Charter	
28	Stroke Team	1027	Met				Stroke Team	Stroke Team Charter	
29	Stroke Team	1028	Met				Stroke Team	Stroke Team Charter	
30	Stroke Team	1029	Met				Stroke Team	Stroke Team Charter	
31	Stroke Team	1030	Met				Stroke Team	Stroke Team Charter	
32	Stroke Team	1031	Met				Stroke Team	Stroke Team Charter	
33	Stroke Team	1032	Met				Stroke Team	Stroke Team Charter	
34	Stroke Team	1033	Met				Stroke Team	Stroke Team Charter	
35	Stroke Team	1034	Met				Stroke Team	Stroke Team Charter	
36	Stroke Team	1035	Met				Stroke Team	Stroke Team Charter	
37	Stroke Team	1036	Met				Stroke Team	Stroke Team Charter	
38	Stroke Team	1037	Met				Stroke Team	Stroke Team Charter	
39	Stroke Team	1038	Met				Stroke Team	Stroke Team Charter	
40	Stroke Team	1039	Met				Stroke Team	Stroke Team Charter	
41	Stroke Team	1040	Met				Stroke Team	Stroke Team Charter	
42	Stroke Team	1041	Met				Stroke Team	Stroke Team Charter	
43	Stroke Team	1042	Met				Stroke Team	Stroke Team Charter	
44	Stroke Team	1043	Met				Stroke Team	Stroke Team Charter	
45	Stroke Team	1044	Met				Stroke Team	Stroke Team Charter	
46	Stroke Team	1045	Met				Stroke Team	Stroke Team Charter	
47	Stroke Team	1046	Met				Stroke Team	Stroke Team Charter	
48	Stroke Team	1047	Met				Stroke Team	Stroke Team Charter	
49	Stroke Team	1048	Met				Stroke Team	Stroke Team Charter	
50	Stroke Team	1049	Met				Stroke Team	Stroke Team Charter	
51	Stroke Team	1050	Met				Stroke Team	Stroke Team Charter	

Education Grid

Unit/Department	Education	Topic	Presenter	Date	Time	Location	Attendees	Feedback
Stroke	Stroke Recognition	Stroke Recognition	Dr. Smith	10/20/13	10:00-11:00	ED	15	Good
Stroke	Stroke Recognition	Stroke Recognition	Dr. Smith	10/21/13	10:00-11:00	ED	15	Good
Stroke	Stroke Recognition	Stroke Recognition	Dr. Smith	10/22/13	10:00-11:00	ED	15	Good

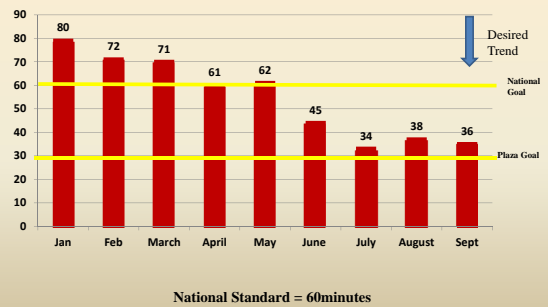
CSC Measures/Metrics

Measure	Target	Actual	Variance
Stroke Recognition	95%	98%	+3%
Stroke Recognition	95%	98%	+3%
Stroke Recognition	95%	98%	+3%

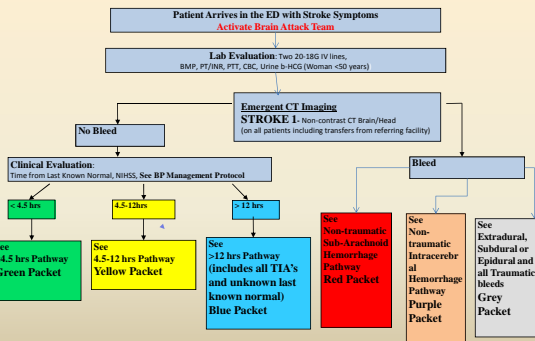
Door to Needle Task Force

CT Time Drop and Stop	Admit Date	Admit Time	CT Order Time	CT Scan Time	CT Report Time	IV tPA Order Time	IV tPA Admin Time	Door to Needle Time
Stroke	10/20/13	10:00	10:15	10:30	10:45	10:50	11:00	10:15
Stroke	10/21/13	10:00	10:15	10:30	10:45	10:50	11:00	10:15

2013 Stroke Door to Needle t-PA Times in Minutes



Pathway Order Sets



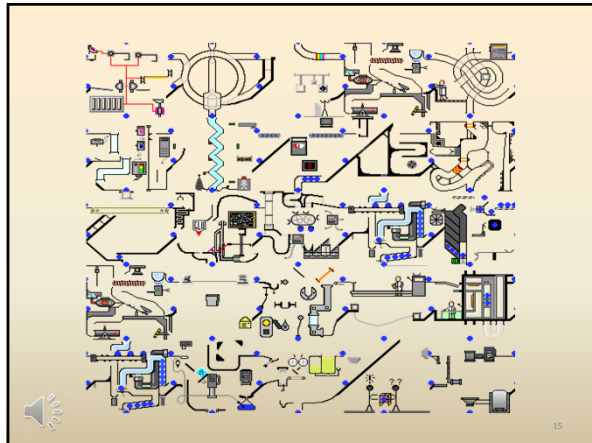
Lessons Learned

- Communicate with everyone frequently
- Involve all departments
- Make assignments and set deadlines
- Ask for suggestions and feedback
- Use the pathways and order sets on every patient
- Continually educate and improve processes
- Review and update all stroke related policies
- Do not re-invent the wheel- utilize resources

Celebrate 2013 Stroke Heroes Celebration



Texas Ranger's Home Game Strike Out Stroke 2013



Thank You

